

# CIO Adapter

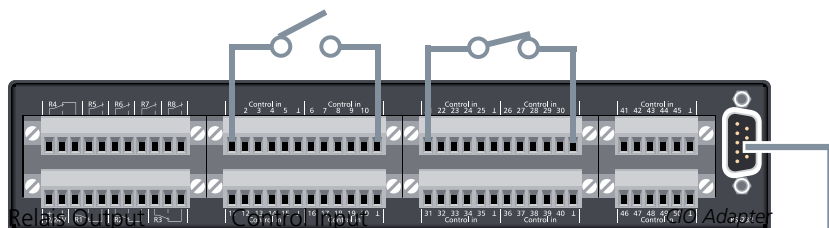


The CIO Adapter is an external input/output expansion module for HeiTel VideoGateways. It offers up to 50 additional alarm control inputs featuring sabotage detection and 8 relays. PTZ domes and cameras can be triggered by specific criteria and the automatically moved to preset camera positions. The CIO Adapter enables system or application related, camera selective alarming and/or a dedicated triggering of event related recording. The 8 additional relays (4 changer, 4 closer) enable the remote control of e.g. doors, light etc. The control signals are routed via the serial interface of the VideoGateway.

- Up to 50 alarm monitored control inputs with various functions
- Up to 8 relay contacts
- Triggering of event related recordings on CamServer, CamDisc SVR and CamDisc HNVR
- Freely definable selection of cameras and triggering of preset positions (domes and PTZ cameras)
- Dedicated micro controller for constant evaluation of input signals
- Serial interface for connection of CamTel SVR, CamServer, CamDisc SVR (s) and CamDisc HNVR
- Pluggable screw terminals for easy wiring
- Easy configuration via CamControl LITE/PRO/CLIENT
- Compact design suitable for desk top and 19"-rack mounting (Option)

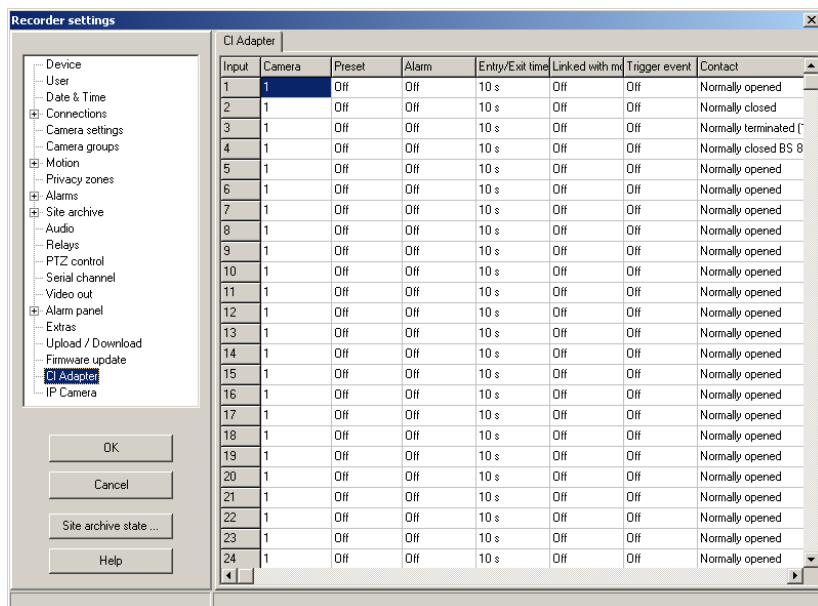


Example control signal  
"NO" "NC"

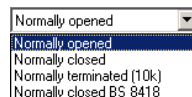


CamDisc SVR 10

RS-232 connection (Modem cable, 1:1)  
with a CamDisc SVR 10



Configuration of the CIO Adapter via  
CamControl software



Menu Recorder settings/CIO Adapter

| Interfaces               |  |
|--------------------------|--|
| RS-232                   | RS-232-Interface (9 pin Sub-D) for connection with Transp.data/Control Interface of the HeiTel VideoGateways |
| Alarm inputs             | 50 alarm inputs (screw terminals)  |
| Control inputs           | 8 relay contacts (4 normally closed/ 4 normally opened)  |
| General                  |  |
| Display elements         | Status LEDs/Power  |
| Power Supply             | External switched power supply, 100-240V AC, 50/60 Hz, 12V DC max. 4 A, 48 W                                 |
| Voltage range            | 8 - 30 V DC  |
| Power input with 12 V DC | < 0,5 A; dependent on the number of activated inputs   |
| Ambient temperature      | 0°C ... +70°C (+32°F ... +158°F)   |
| Housing/Enclosure        | Desktop: 221 x 44 x 155 (WxHxD) mm<br>19"-mounting: ½ 19" x 1HE x 155 mm (WxHxD)                             |

|                  |   |
|------------------|---|
| Protection class | IP30 according to IEC60529, DIN EN 60529      |
| Weight           | 1.2 kg  |
| Approvals        | CE (EN 50130-4, EN 55022 Kl. B, EN 61000-6-3) |
| Options          | 19" Mount Kit, CamMount Kit                   |
| Warranty         | 24 month                                      |

Your authorised dealer

Errors and omissions excepted, technical specification and availability are subject to change without notice.