

Technical Product Information No. 07.01

Product/Version	CamServer 2, CamDisc^{svr} 4s, CamDisc^{svr} 10s, CamDisc^{svr} 4, CamDisc^{svr} 10, CamTel^{svr} 4, CamTel^{svr} 10, CamMobile 4, CamMobile 10
Date	May 2007
Topic	Firmware update for the svr series, CamMobile and CamServer 2
Short description	Instructions for the implementation of a firmware update for the svr series, CamMobile and CamServer 2
Download of current firmware version	CamDisc ^{svr} 4s, CamDisc ^{svr} 10s, CamServer 2: http://www.heitel.com/en/service/upgrades/firmware/camdisc-svr-s-camserver-2/ CamDisc ^{svr} 4, CamDisc ^{svr} 10, CamTel ^{svr} 4, CamTel ^{svr} 10, CamMobile 4, CamMobile 10: http://www.heitel.com/en/service/upgrades/firmware/svr-serie-cammobile/
Download CamControl LITE demo version	http://www.heitel.com/en/service/downloads/CamControl LITE
Download CamControl PRO demo version	http://www.heitel.com/en/service/downloads/CamControl PRO

1. Introduction

With the introduction of the **CamControl LITE** software 3.64 and **CamControl PRO** software 3.65, a new procedure is available for the firmware update of the devices named above.

2. Requirements

- 2.1. **CamControl LITE** software 3.64 or later; **CamControl PRO** software 3.65 or later
- 2.2. Subdirectory /DEVICEUPDATES in the **CamControl LITE/PRO** directory
- 2.3. At least one valid firmware for the selected device type (e.g. for **CamDisc^{svr} 4**)

Note: There may be additional firmware versions for this device type or other device types (e.g. for **CamDisc^{svr} 4s**) in the /DEVICEUPDATES directory.

3. Update Procedure

- 3.1. Use **CamControl LITE/PRO** 3.64 (or later) to select the transmitter that is to be updated to the current firmware version.
- 3.2. Once you have successfully established a connection to the device, use the **Settings** button to open the device settings (**Recorder settings/Firmware update**).

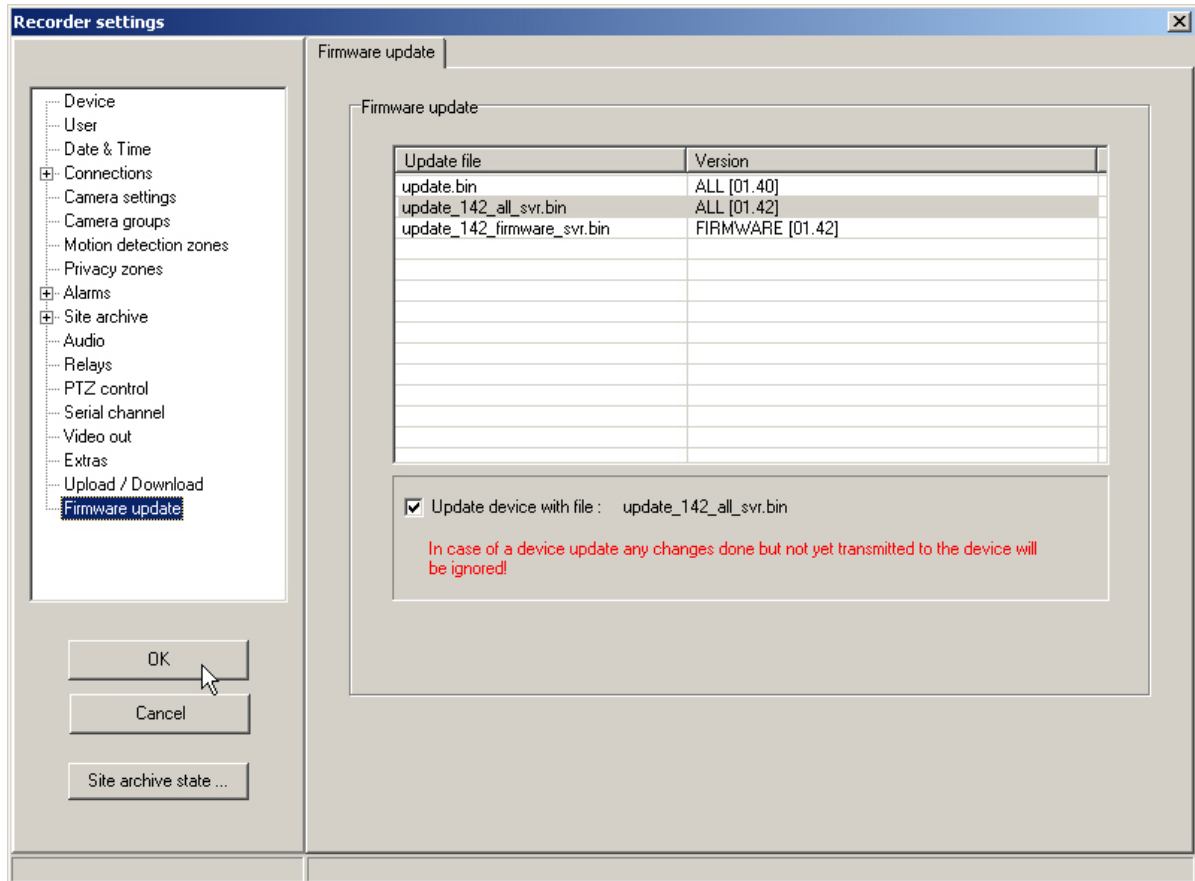
If the menu item **Firmware update** is not available in the selection list, this may be due to one of the following causes:

- **CamControl LITE/PRO** is not at version 3.64 or later.
 - There is no /DEVICEUPDATES subdirectory.
 - No corresponding firmware for the selected device type is available in the /DEVICEUPDATES directory.
- 3.3. Select the desired firmware file, activate the **Update device with file:** option and confirm your selection with **OK**.

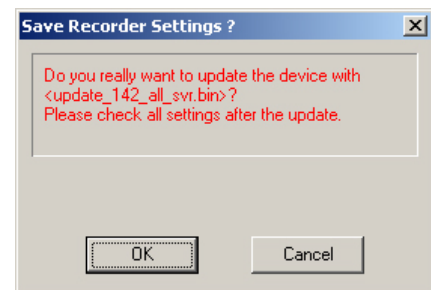
In the selection list for the **Firmware update** menu item, different valid firmware versions can be displayed, as presented in the following example:

- The **Update file** column shows the name of the firmware file.
- The **Version** column shows the type and, in square brackets, the version number. For the firmware type there are two options, ALL and FIRMWARE:
 - ALL: This is an update file (4 MB) that contains - in addition to the firmware - an embedded Linux with current RAMDISK, as required as of firmware 1.38.
 - FIRMWARE: This update file (approx. 500 KB) only contains the firmware. These files may only be used to update transmitters that have previously had at least firmware 1.38 of the ALL type installed.

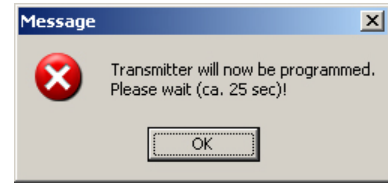
On the HeiTel website, only firmware updates of the ALL type are available.



- 3.4. After confirming with **OK**, a prompt will appear.
- 3.5. After confirming the prompt with **OK**, the transmission of the firmware file starts. A status window shows the progress of the transmission. This is followed by a verification of the transmitted firmware file.



- 3.6. After the firmware file has been verified successfully, you can start the programming of the transmitter by clicking **OK**.



Attention: In exceptional cases, the message "Transmission error! Device is not being programmed." will appear during the verification of the firmware file. You should still continue the process; after the device has restarted automatically, you should select the firmware version again to see if your device now reports the correct firmware version (see **Recorder settings / Device**).



- 3.7. The device is reset automatically and then restarted. The whole process takes several minutes.
- 3.8. Check the settings after selecting the device again.

4. Alternative Update Procedure (CamControl LITE only)

For a larger number of identical updates to be implemented you can continue to follow the previously used update procedure:

- 4.1. Copy the desired update file (*.bin) into the **CamControl LITE** program directory and rename the file to UPDATE.BIN.
- 4.2. Click the HeiTel logo to follow the update procedure described on the following pages!

You can also use the alternative update procedure if you want to carry out a firmware update using **CamControl LITE** software that does not correspond to version 3.64 or later.

This procedure can also be used analogously for devices of the type **CamDisc^{svr}** or **CamServer 2**, even if these are not explicitly listed in the description.

1. Introduction

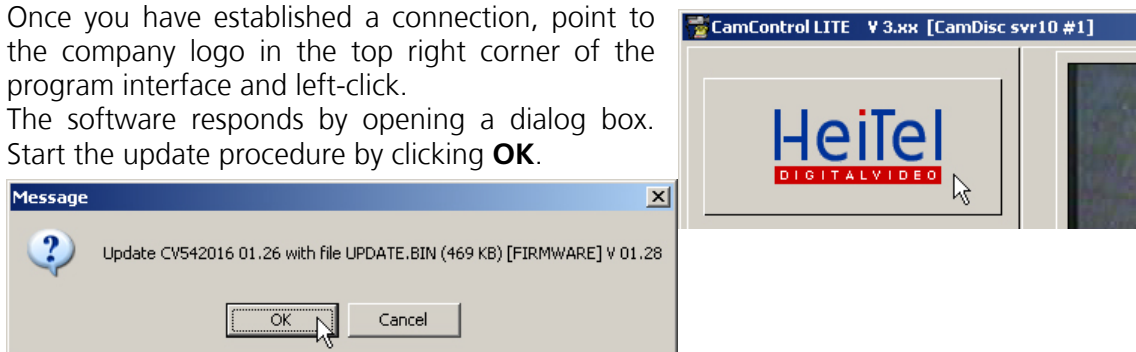
The following step-by-step instructions explain how to install a new firmware version for the devices **CamDisc^{svr} 4**, **CamDisc^{svr} 10**, **CamTel^{svr} 4**, **CamTel^{svr} 10**, **CamMobile 4** and **CamMobile 10**. We strongly recommend that you update your **svr** series device or **CamMobile** with the most recent firmware in order to benefit from bugfixes and to be able to use all the functions of the **svr** series/ **CamMobile**.

2. Requirements

- 2.1. Please note with **CamDisc^{svr} 4** and **CamDisc^{svr} 10** that you can only update the firmware of devices with a serial number greater than CQ519004/CV505002. You can install the update on **CamTel^{svr} 4**, **CamTel^{svr} 10**, **CamMobile 4** and **CamMobile 10** devices regardless of the serial number.
- 2.2. You need a PC with a current version of **CamControl LITE** in order to be able to install the new firmware. Information on the current versions is available at <http://www.heitel.com/>. Using the current version of **CamControl LITE** ensures that the new functions installed with the update are actually supported in your version.
- 2.3. Ensure that you can establish either a direct or remote connection to your device with **CamControl LITE**.

3. How to install a firmware update

- 3.1. Copy the file UPDATE.BIN to the program directory of the **CamControl LITE** software (default: C:/CamControl LITE).
- 3.2. Open the file CAMTEL.INI with a text editor, e.g. with the Windows program **Editor**. You will find this program under **Start\Programs\Accessories**. You will find the file CAMTEL.INI in the **CamControl LITE** program directory.
- 3.3. In the file CAMTEL.INI search for the entry [EXTRA] and insert the command UPDATE=1.
Syntax:
[EXTRA]
UPDATE=1
- 3.4. Now save CAMTEL.INI.
- 3.5. Start **CamControl LITE**.
- 3.6. Establish a connection to the device on which you want install the update.
Note: All types of connection are supported! For more detailed instructions on how to establish a connection refer to the relevant device manual.
- 3.7. Once you have established a connection, point to the company logo in the top right corner of the program interface and left-click.
- 3.8. The software responds by opening a dialog box. Start the update procedure by clicking **OK**.

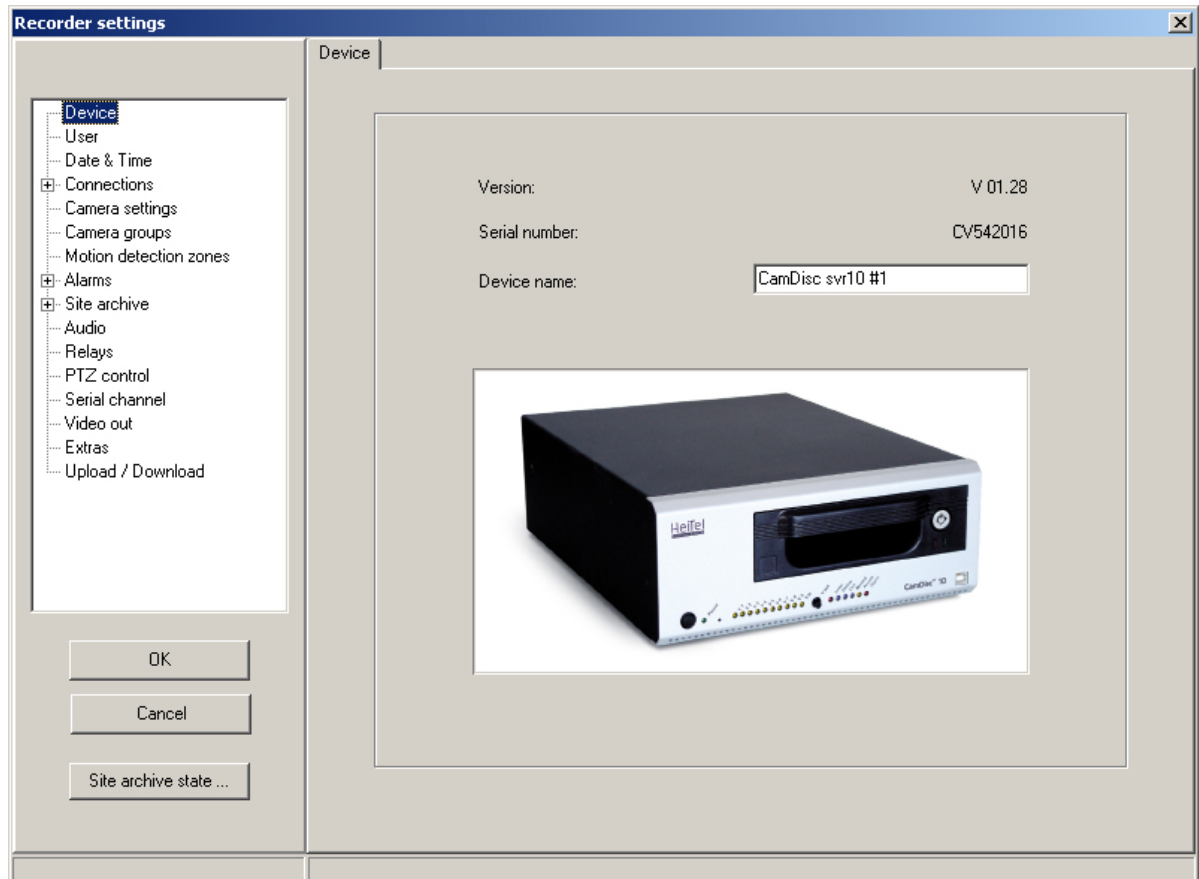
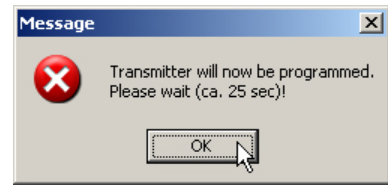


Note: The version information in the dialog box illustrated is purely illustrative and of no significance in the following steps.

3.9. Once you have copied the file UPDATE.BIN, the device is automatically reset and then restarted. The whole process takes about two minutes.

Confirm the message with **OK**.

3.10. We recommend that you check the version number of the newly installed firmware. To do this, establish a connection to the device again and then go to the device settings. You will find the version information under **Recorder settings\Device**.



3.11. Then delete the UPDATE=1 command in the file CAMTEL.INI, or change the entry to UPDATE=0 in order to deactivate the update function.

3.12. Your device now has the current firmware version.